

Overview

ARCHER RGB 6000/8000 models are upgrade from ARCHER RGB 5000, they designed for lighting professionals performing primarily indoor events and small outdoor shows. This includes clubs, corporate events, theaters, house of worship, small sports arenas, and festival shows.



Front Panel



Rear Panel



Front 45°



Rear 45°

Specifications

Light source

	<u>ARCHER RGB 6000</u>	<u>ARCHER RGB 8000</u>	
Red :	1200 mW@638nm	1800 mW@638nm	<i>Multi-Mode Direct-Inject diodes</i>
Green :	2000 mW@525nm	3000 mW@525nm	<i>Multi-Mode Direct-Inject diodes</i>
Blue :	3000 mW@450nm	3500 mW@450nm	<i>Multi-Mode Direct-Inject diodes</i>

Beam Profile

Beam Diameter (Projector Window) :	5mm
Divergence (Full angle) :	1.2mrad
Modulation :	Analog 50KHZ
Laser Class :	Class IV

Scanner

Galvo :	40kpps @ 8° ILDA test pattern
Scan Angle :	60° Max

Interfaces & Controls

Control :	ILDA in (Differential), ILDA out
Safety :	Key Switch
Remote Interlock :	5 pins XLR

Optional Components

Embedded Controller :	Moncha.lite 2 or Pangolin FB4 (upon request)
-----------------------	--

Thermal Control

Cooling :	Active Cooling/heating by TEC Peltier Elements
Ventilation :	50mm thermal-controlled fan * 2

Product Information

ARCHER RGB 6000/8000

ABLE
LASER TECHNOLOGY

Electric

Operating Voltage : AC 110V-240V

Power Consumption : 350W Max

Physical

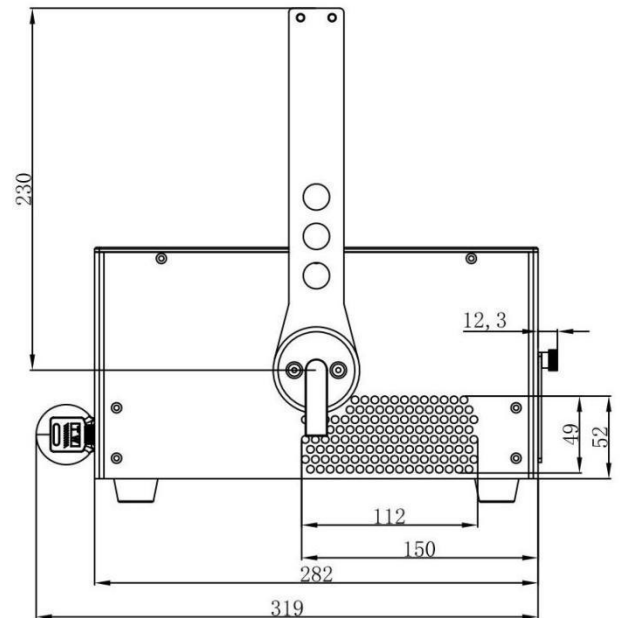
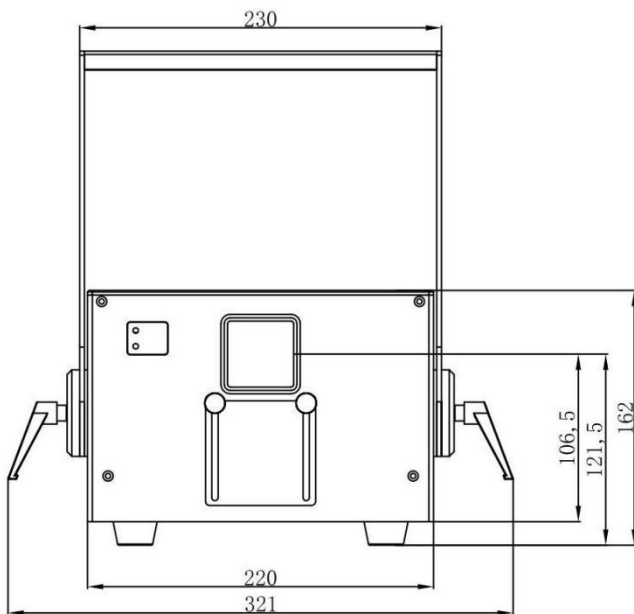
L* W * H : 282mm* 220mm* 162mm (Without Yoke)

Weight : 8.3kg (Without Yoke)

Housing Materials : Black Anodized Aluminum

IP grade : IP52

Packaging : Carton package



Compliance

Compliance : FDA/CDRH, CE

Warranty

Warranty : 24 months parts and labor

ABLE LASER TECHNOLOGY

3 Floor, Tower C, Huaming Industrial Park, Huanjiao Village, Shijing Town, Baiyun District, Guangzhou, China
TEL: +86 02 3639 7412 FAX: +86 02 3639 7413

www.able-laser.com
sales@able-laser.com